

TRANSIENT CAMP TO BE INSURED

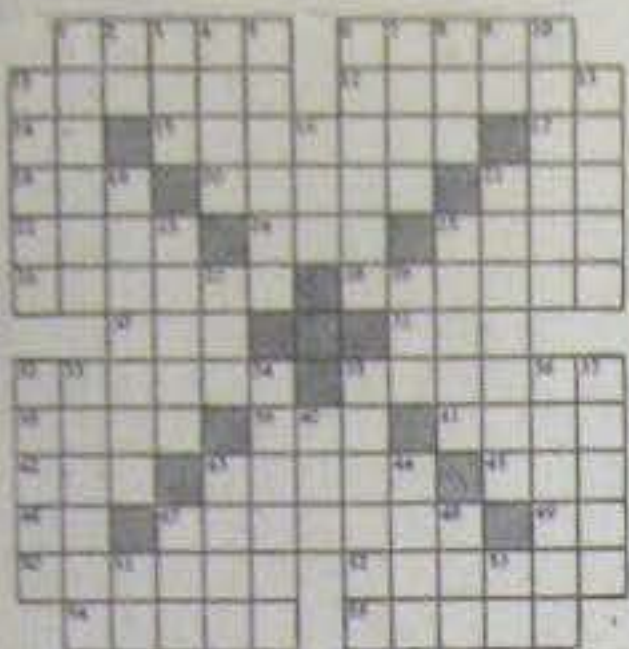
State Authorized to Place \$20,000 With New Office.

State officials have today authorized the insurance of the transient camp at the site of the former State House, which is to be used for the reception of transient workers.

Puzzle Faced BY DEMOCRATS

Through Edward J. Dwyer, of West Hartford, State Senator, Francis Brown, of New Britain, is expected to be elected to the office of Governor in 1936.

Times Crossword Puzzle



Answers to Yesterday's Puzzle: 1-ACROSS: WELFARE BOARD; 2-DOWN: WOMAN TAKES POISON; 3-DOWN: ...

State officials today authorized the insurance of the transient camp at the site of the former State House...

ASSEMBLY SEAT SOUGHT BY EAST HARTFORD MAN

James W. Malloy, 30, 18 West Street, East Hartford, today announced that he has applied for the seat of the House of Representatives in the 1st district.

WELFARE BOARD WANTS 6 MORE INVESTIGATORS

The welfare board today sought six additional investigators. They are needed to keep the case load at the bureau at the minimum.

WOMAN TAKES POISON AFTER FAMILY QUARREL

Madeline Newman, 45, quarreling with her husband, Charles, 48, yesterday afternoon at 10, 224 White street, took a fatal dose of poison.

GOVERNOR PRAISES CONN. C. OF C. SERVICE

Hartford, Henry Joseph, president, Connecticut Society of Civilian Control, today praised the service of the Connecticut National Guard.

WILKINSON NASH

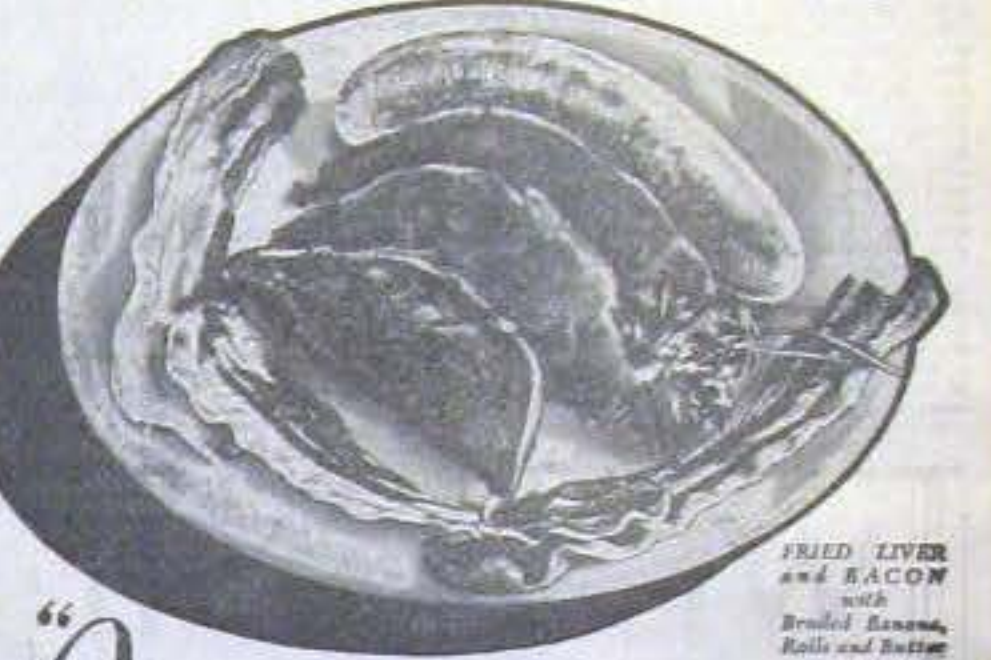
William Nash, 75, of Chapel street, today Monday at the Memorial hospital. He was 1007 1/2 in height and 150 in weight.

2 BLENDS - 2 PRICES

Red Label America's finest tea blended from the choicest, high grown teas of the finest gardens.

'SALADA' TEA

A rich full bodied blend of quality teas - truly 'A Revelation in Tea Value'



I surely am partial to FRIED LIVER, BACON and a BROILED BANANA

... WHEN OUR PEOPLE BROUGHT to my desk a sample of the feature banana "special" for Wednesday, I imagine my face lighted up...



Fried Food and Bread Shertake with 10c

Waldorf serves only Fully-Ripened BANANAS

Need Money? The National Student Loan Board... COLONIAL BUDGET PLAN

Need Money? The National Student Loan Board... COLONIAL BUDGET PLAN

Park Street Furniture Co. 773 Park Street. Electric Washer. What a buy! Extra large Tub, will wash 5 sheets at once... \$34.50 Weekly Limited Time Only.

Croft makes good on the promise that comes from its head. There's a promise of full-bodied mellowness in the head on every glass of Croft Ale... CROFT ALE

STORY OF CONNECTICUT - Litchfield County Towns



No. 239. The story of the settlement of the Connecticut River valley... The first settlement was made at Hartford...